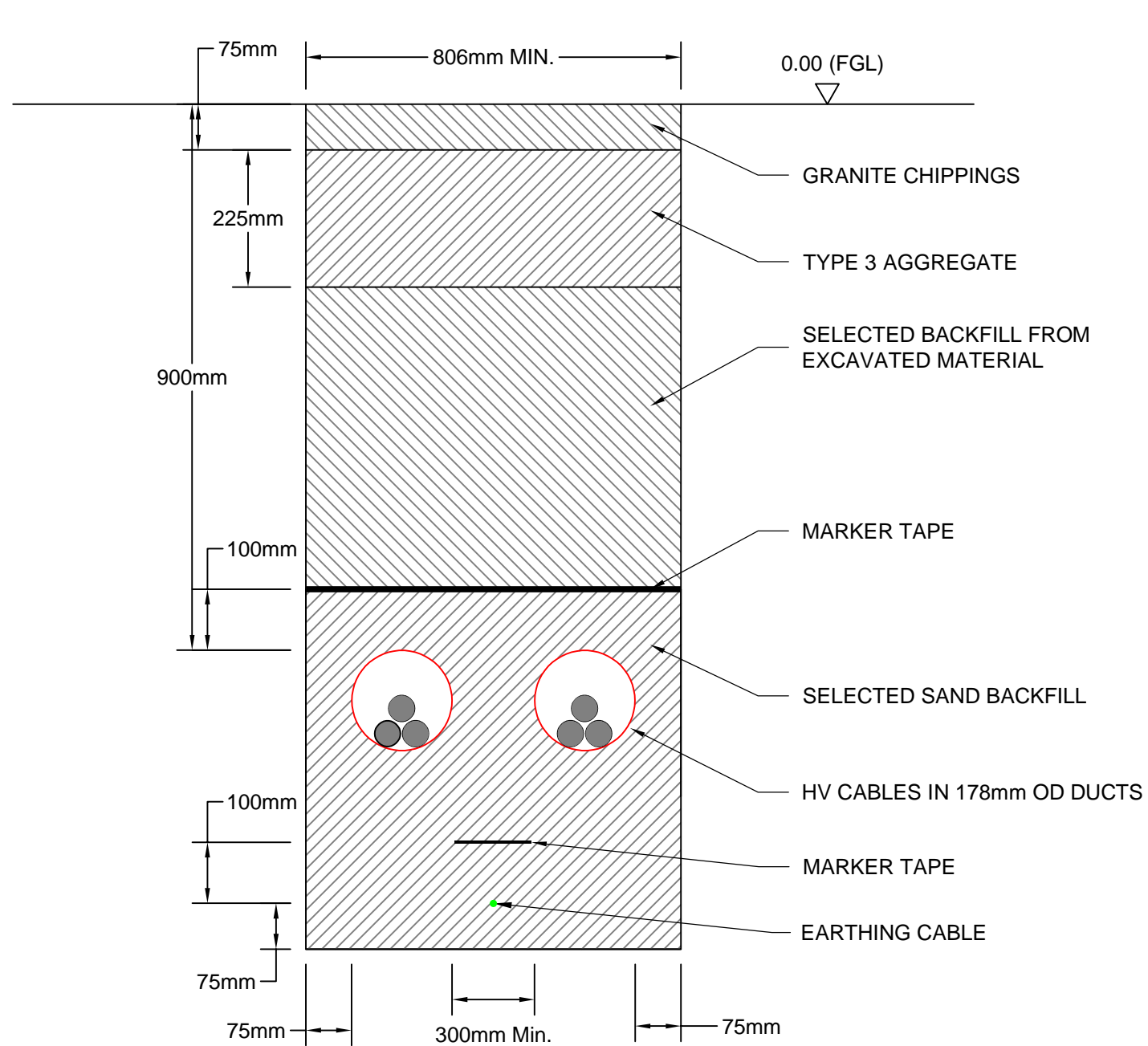
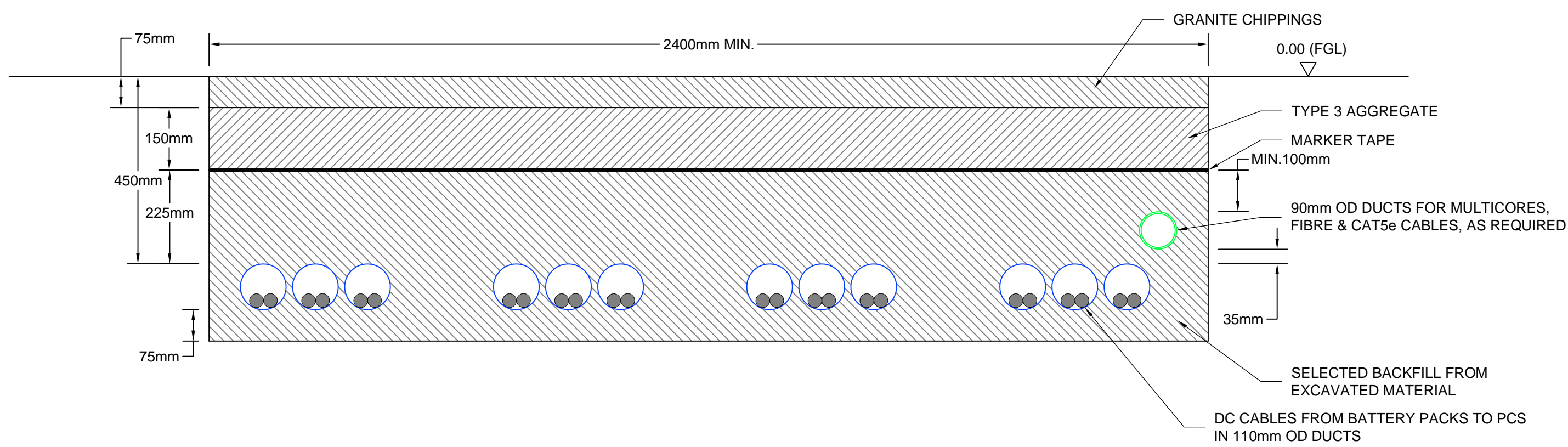


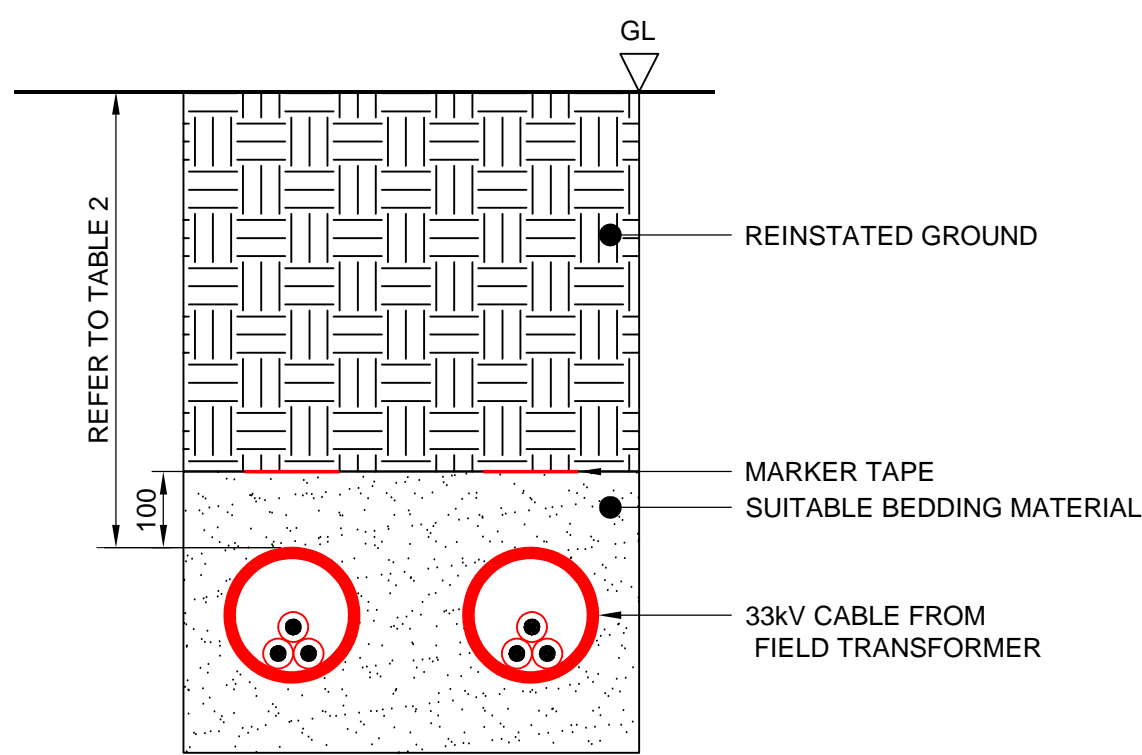
TYPICAL SECTION THROUGH LV, COMMS, AND CONTROL CABLE DUCTS  
(NOT TO SCALE)



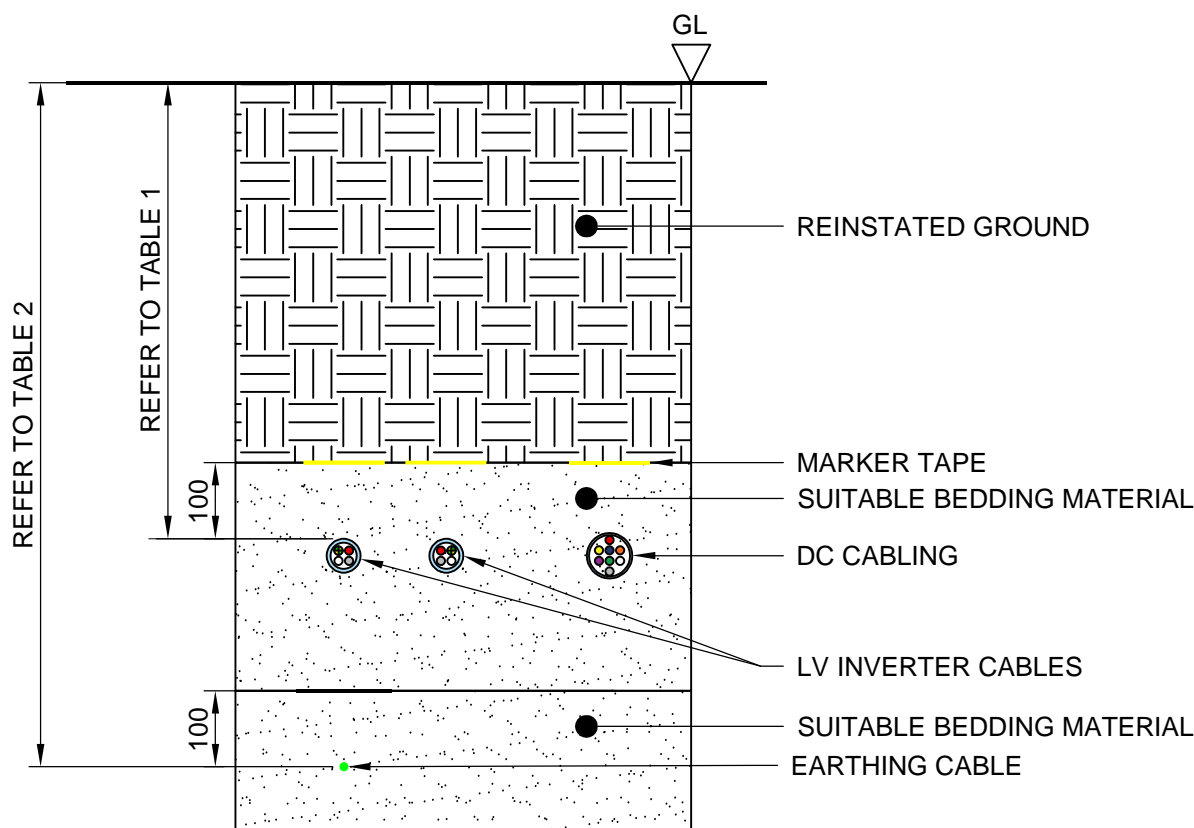
TYPICAL SECTION THROUGH HV CABLE DUCTS  
(NOT TO SCALE)



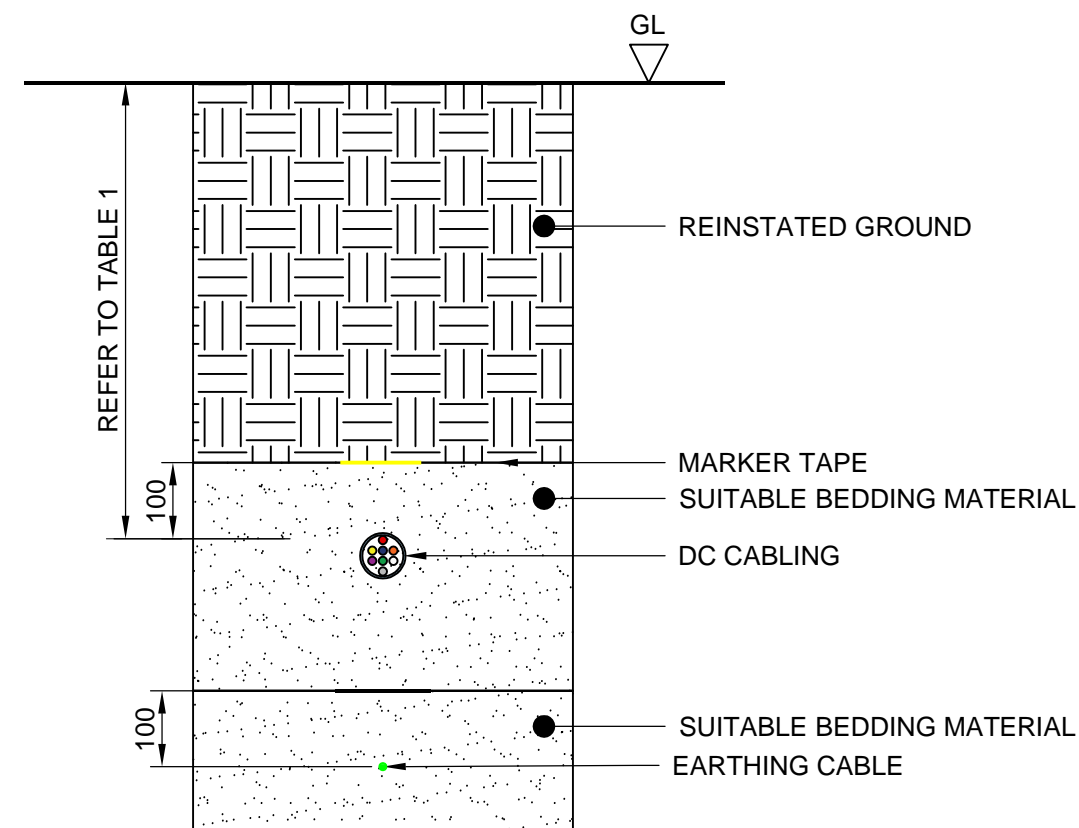
TYPICAL SECTION THROUGH DC CABLE DUCTS  
(NOT TO SCALE)



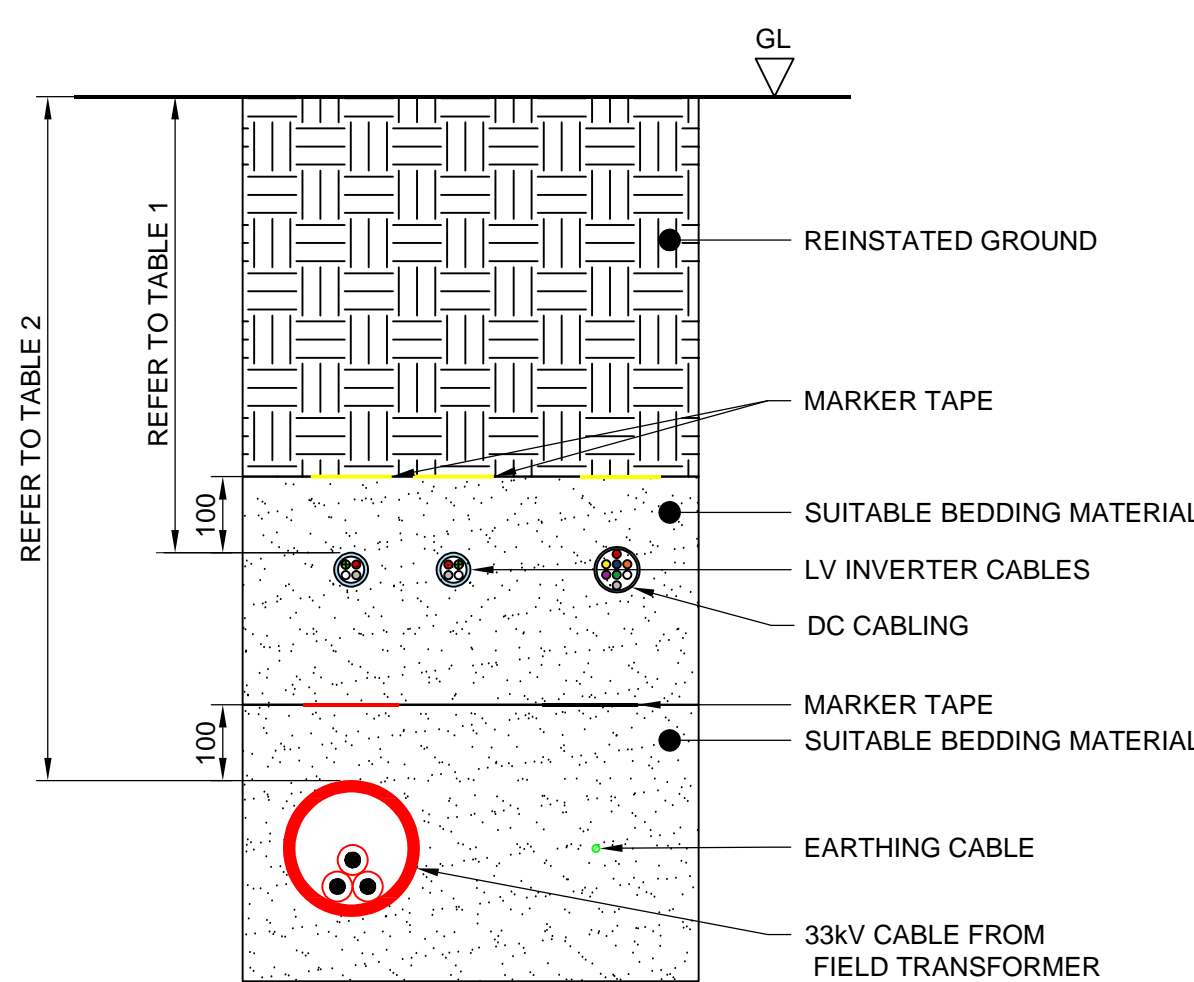
33kV AC CABLE TRENCH TO SUBSTATION  
(NOT TO SCALE)



DC CABLE TRENCH WITH LV INVERTER SUPPLY  
(NOT TO SCALE)



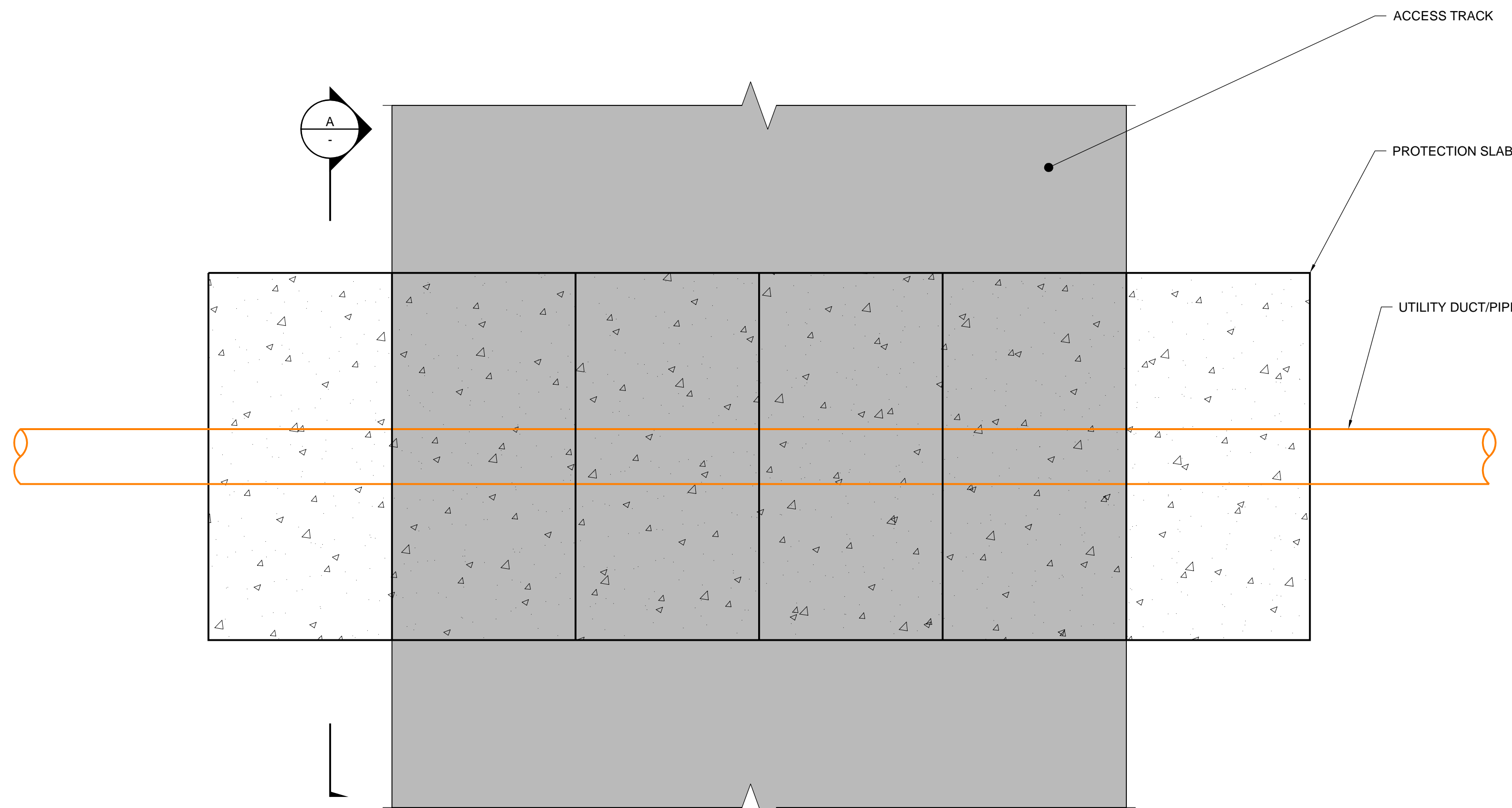
INTERNAL DC CABLE TRENCH  
(NOT TO SCALE)



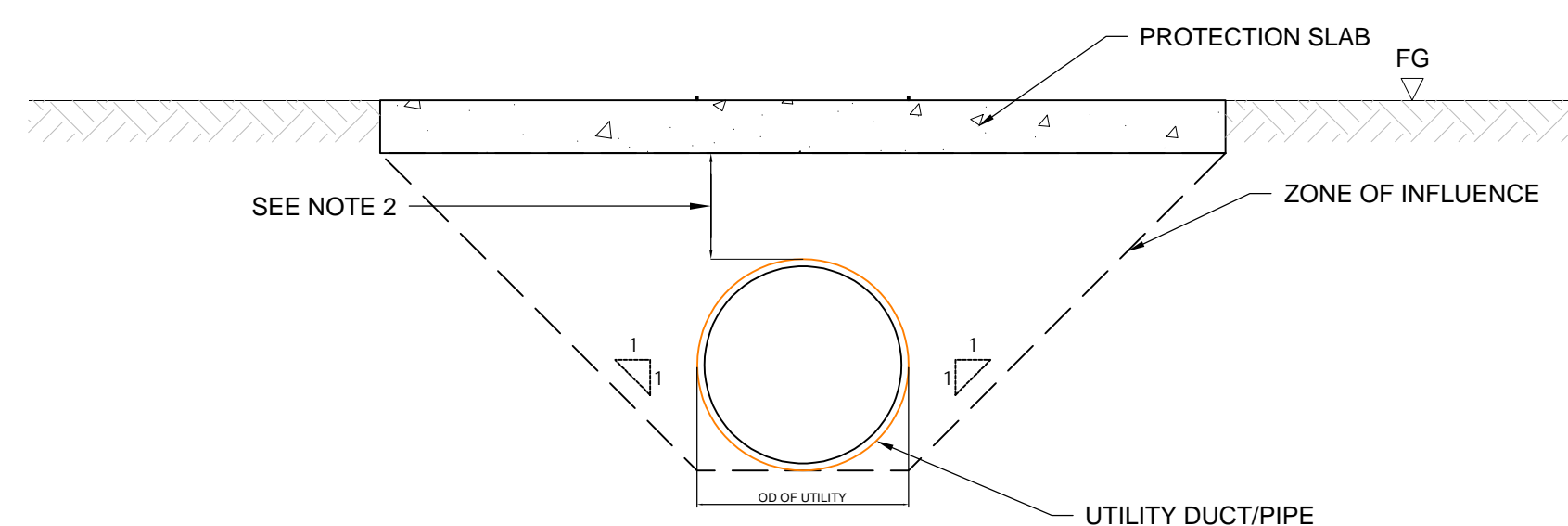
MIXED VOLTAGE CABLE TRENCH  
(NOT TO SCALE)

TABLE 1: DEPTH OF LV CABLE LAYING	
ENVIRONMENT	INDICATIVE DEPTH OF COVER
FOOTWAY	450mm
CARRIAGEWAY	600mm
AGRICULTURAL LAND	900mm
OTHER LAND	450mm

TABLE 2: DEPTH OF HV CABLE LAYING	
ENVIRONMENT	INDICATIVE DEPTH OF COVER
FOOTWAY	600mm
CARRIAGEWAY	750mm
AGRICULTURAL LAND	900mm
OTHER LAND	600mm



PLAN VIEW OF GENERIC UTILITY (AS REQUIRED)  
(NOT TO SCALE)



SECTION A-A  
(NOT TO SCALE)

- DRAWING IS FOR INDICATIVE PURPOSES ONLY.
- DRAWING IS IN MILLIMETRES (mm) UNLESS OTHERWISE STATED.
- FINAL UTILITY PROTECTION MEASURES AND EASEMENTS TO BE AGREED DURING DETAILED DESIGN WITH APPROVAL FROM UTILITY OWNER.

Regulation 5(2)(a) Infrastructure Planning (Applications: Prescribed Forms and Procedure) Regulations 2009.

NOT FOR CONSTRUCTION

FOR INFORMATION ONLY